


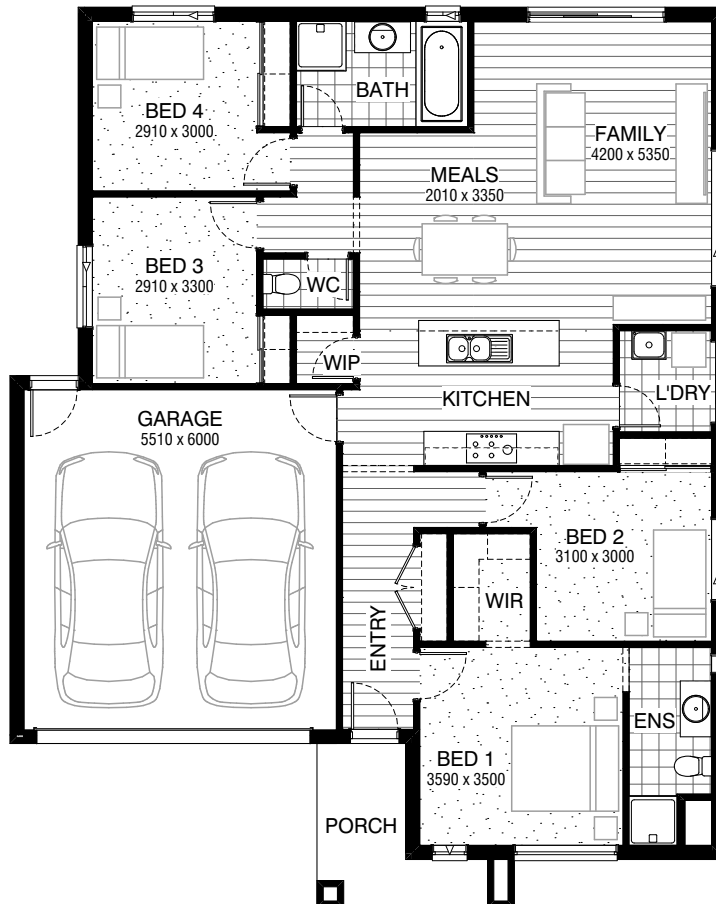


Total squares **18.6sq**

 **4**  **2**  **2**



FLOORPLAN OPTIONS

All available ready-to-go floorplan options for this design can be viewed on the following pages, or visit www.burbank.com.au.

Facades available:

Arkley, Drysdale, Haring

Overall home width 12.59m

Overall home length 15.83m

Residence 130.6m² 14.1sq

Garage 36.1m² 3.9sq

Porch 6.1m² 0.7sq

Total 172.8m² 18.6sq

Listed details based on Drysdale facade floorplan (illustrated)

*Copyright conditions. All photos and illustrations are representative only. Floor plans and specifications may be varied by Burbank without notice, the dimensions are diagrammatic only and a Building Contract with final drawings will display correct dimensions and detail. All designs are the property of Burbank and must not be used, reproduced, copied or varied, wholly or in part without written permission from an authorised Burbank representative. Copyright Burbank Australia Pty Ltd. ABN 91 007 099 872. Builders Registration Number CDB-U-52603.

Call 13 BURBANK
Visit burbank.com.au

FLOORPLAN OPTIONS




 **4**  **2**  **2**



KITCHEN OPTION STANDARD COLOUR BOARD

Provide Kitchen Option with 632mm wide microwave space and drawer under and 800mm base cupboard in lieu of 400mm wide and 900mm wide base cupboards to island bench.
Relocate island bench 50mm towards Laundry.
Option contains standard specification

FLOORPLAN OPTIONS

 **4**  **2**  **2**



KITCHEN OPTION UPGRADE COLOUR BOARD

Provide Kitchen Option with 632mm wide microwave space and drawer under and 800mm base cupboard in lieu of 400mm wide and 900mm wide base cupboards to island bench.
Relocate island bench 50mm towards Laundry.
Option provides upgrade specification

FLOORPLAN OPTIONS



**LAUNDRY OPTION
STANDARD COLOUR BOARD**

Provide Laundry Option with s.s inset trough in 800mm wide base cupboard, 800mm wide overhead cupboard and additional tiled splashback and benchtop to suit.
Option contains standard specification.




FLOORPLAN OPTIONS



LAUNDRY OPTION UPGRADE COLOUR BOARD

Provide Laundry Option with s.s inset trough in 800mm wide base cupboard, 800mm wide overhead cupboard and additional tiled splashback and benchtop to suit.
Option provides upgrade specification

FLOORPLAN OPTIONS


 **4**  **2**  **2**



ENSUITE OPTION STANDARD COLOUR BOARD

Provide Ensuite Option with 1no. 1200mm x 900mm polymerble shower base in lieu of standard.
1no. 1582mm wide vanity unit with 2no. basins in lieu of standard. Provide 1no.1027mm x 610mm aluminium sliding window in lieu of standard.
Option contains standard specification

FLOORPLAN OPTIONS

 **4**  **2**  **2**



ENSUITE OPTION UPGRADE COLOUR BOARD

Provide Ensuite Option with 1no. 1200mm x 900mm
tiled shower base in lieu of standard, with 300mm high x 600mm wide tiled niche.
1no. 1582mm wide vanity unit with 2no. basins in
lieu of standard.

Provide 1no. 1027mm x 610mm aluminium sliding window in lieu of standard.
Option provides upgrade specification

FLOORPLAN OPTIONS

 **4**  **2**  **2**



ALFRESCO OPTION




Provide Alfresco to rear of Family with tiled hip roof, structural concrete floor, light point and 2no. 470mm x 470mm brick piers.

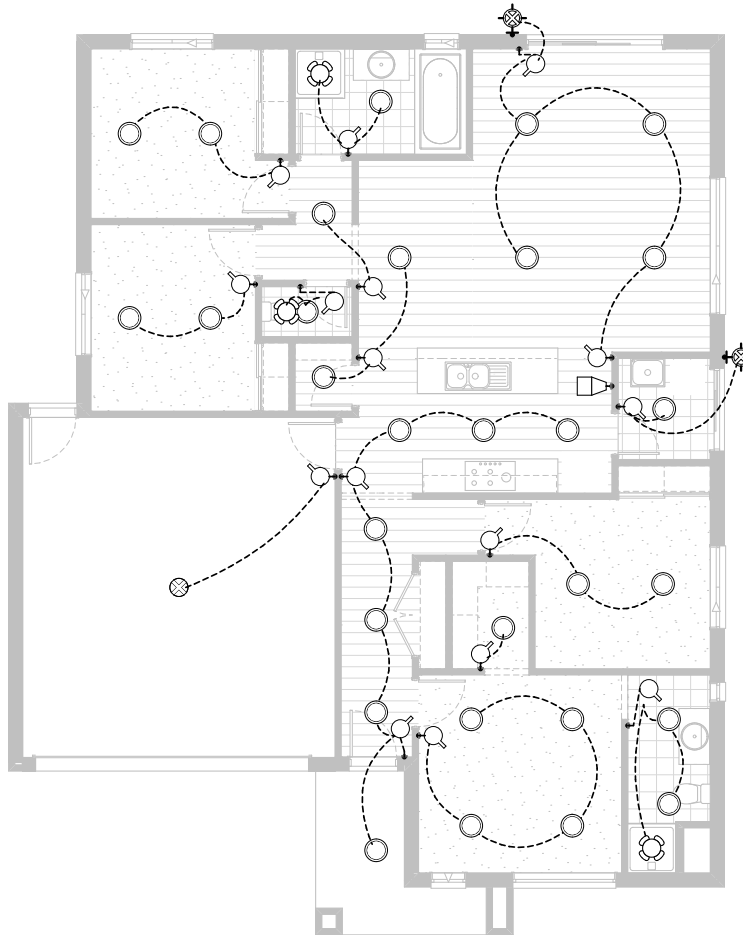
Increases area by 14.40m².

Increase length by 3240mm.

Overall width is 4430mm.

FLOORPLAN OPTIONS

 **4**  **2**  **2**



Option ELE-1

Provide LED downlight upgrade.